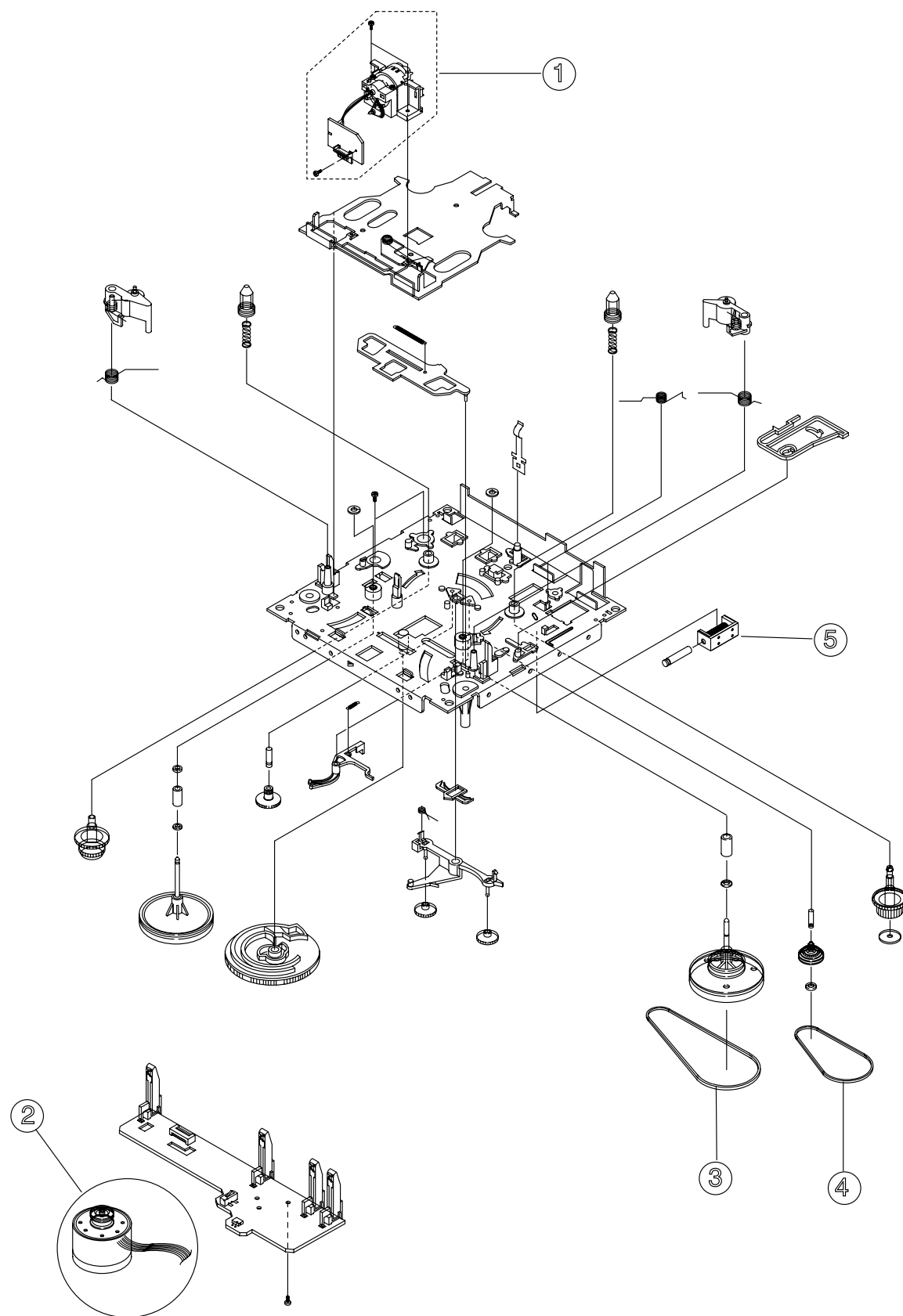


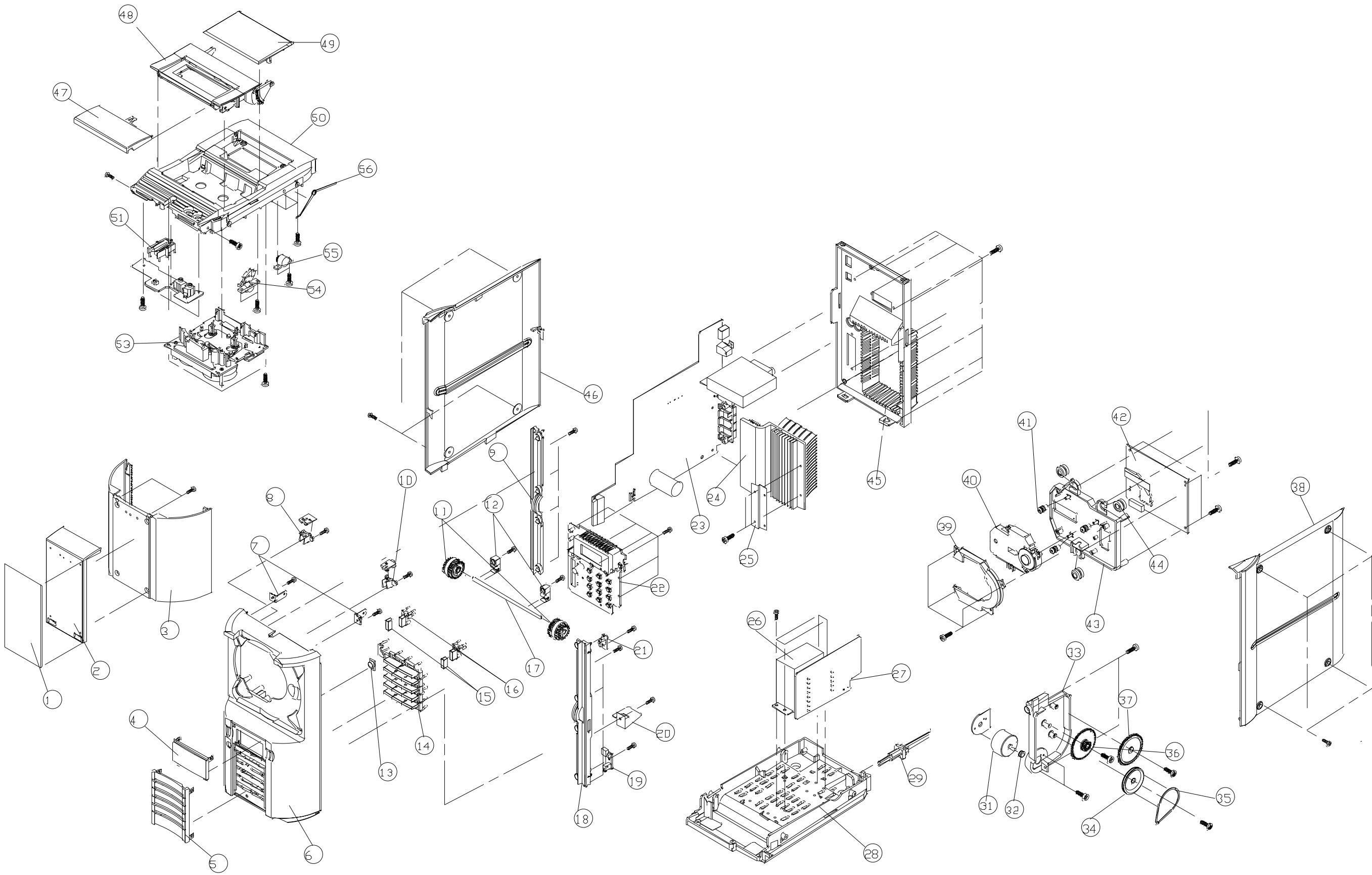
2.Exploded Views and Parts List

2-1 Auto Reverse Cassette Deck



No.	Code No.	Description	Specification	Remarks
	AH59-00122A	ADR248BTR		
1	AH81-00098A	ASS,Y HEAD	TR981PA MT91-11011S	
2	AH81-00422A	ASS,Y MOTOR	CCM090L2 MT91-15013Y	
3	AH81-00100A	BELT MAIN	ADR2400S-MAIN 6602-001037	
4	AH81-00101A	BELT FR	ADR2400S-FR 6602-001055	
5	AH81-00102A	SOLENOID	ADR2400-1 MT75-00049A	

2-2 Total Exploded View and Parts List

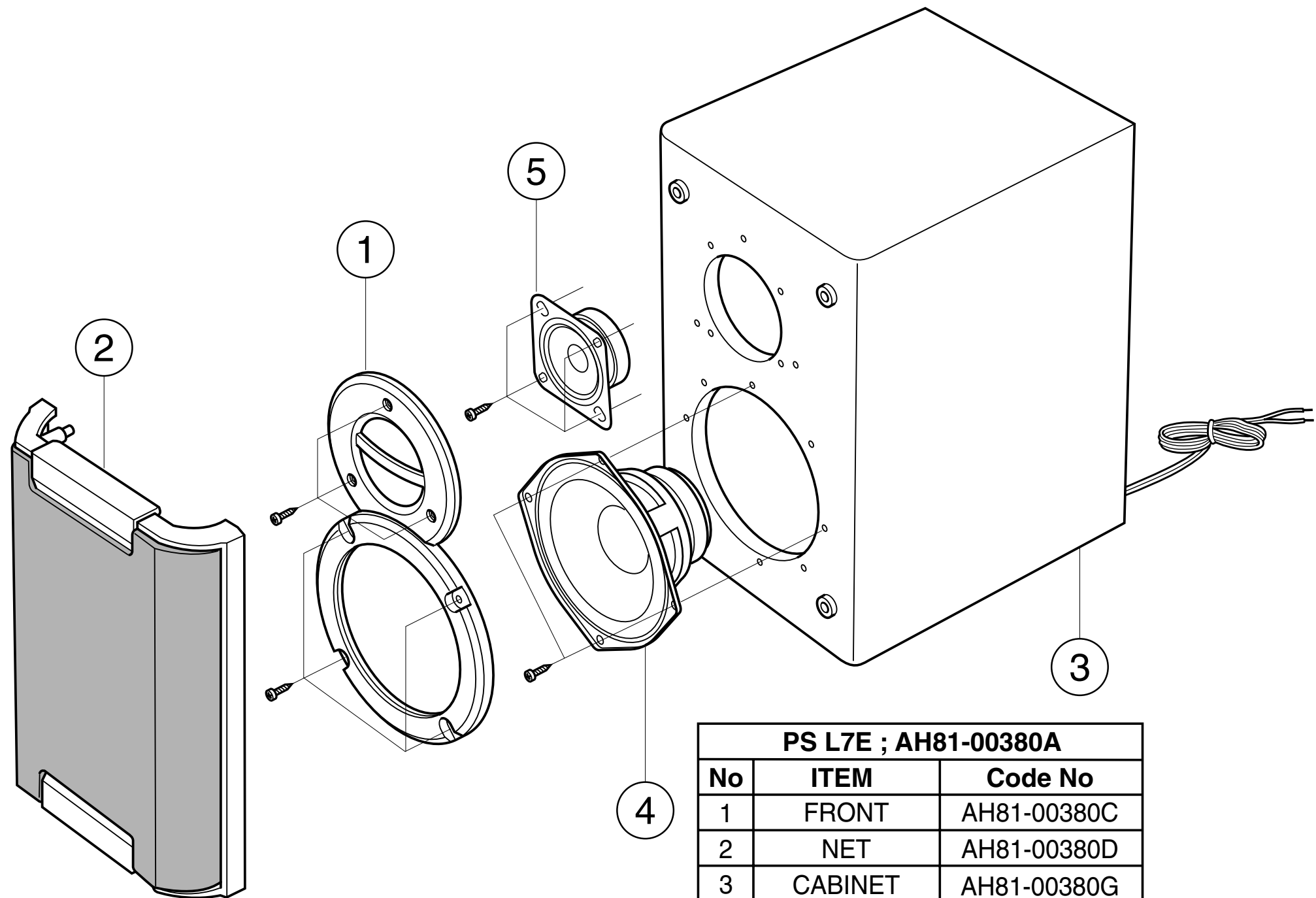


## 2-2-1 Parts List

No.	Code No.	Description	Specification	Remarks	No.	Code No.	Description	Specification	Remarks
1	AH64-01107A	DECORATION-SHEET	MM-L7,0.8,-,WHT,	MML7	51	AH64-01114A	KNOB-OPEN	MM-L7,ABS ,-,NI PL,-,-,-	
1	AH64-01107B	DECORATION-SHEET	MM-L7,0.8,-,WHT,"	MM-ZL7	53	AH59-00122A	DECK-CASSETTE	ADR248BTR,MM-L7,-,-,DC12V,-,-	
2	AH64-01105A	DECORATION-DOOR CD	MM-L7,ABS ,-,,-,GRAY,-		54	AH95-50001A	ASSY-LATCH	MAX555,	
3	AH64-01109A	DOOR-CD	MM-L7,AS SAN,-,CLEAR,-,-,-		55	AH61-80030A	DAMPER-ASSY	-,POM,M0.8,G130,BLK,-,	
4	AH64-01115A	WINDOW-VFD	MM-L7,PMMA,-,-,-,SMOKE,-		56	AH61-00648A	SPRING-EJECT	MM-L7,SUS 304 WPB,PI 1.0,-,-,-	
5	AH64-01104A	DECORATION-FRONT	MM-L7,ABS ,-,,-,GRAY,-	MML7 RDS					
5	AH64-01104B	DECORATION-FRONT	MM-L7,ABS ,-,,-,GRAY,-	MMZL7					
5	AH64-01104C	DECORATION-FRONT	MM-L7,ABS ,-,,-,GRAY,-"	MMZL7 RDS					
5	AH64-01104D	DECORATION-FRONT	MM-L7,ABS ,-,,-,GRAY,-"						
6	AH64-01096B	CABINET-FRONT	MM-L7,BASIC,MIPS 94V2,-,GRY						
7	AH61-00647A	BRACKET-SIDE	MM-L7,SECC ,T 1.0,-,-						
8	AH61-00644A	HOLDER-ILLUMINATION	MM-L7,ABS ,NI PL,-,-,-						
9	AH61-00637A	HOLDER-GUIDE L	MM-L7,ABS 94HB,GRAY,-,-,-						
10	AH61-00644B	HOLDER-ILLUMINATION	MM-L7,ABS ,NI PL,-,-,-						
11	AH66-00139A	GEAR-SHAFT	MM-L7,ABS,-,-,-,BLK,-,-,-						
12	AH61-00645A	HOLDER-STOPPER	MM-L7,ABS ,GRAY,-,-,-						
13	AH67-00100A	LENS-REMOCON	MM-L7,PMMA,SMOKE,-,-,-,-						
14	AH64-01113A	KNOB-MAIN	MM-L7,ABS ,-,SILVER,-,-,-,-						
15	AH64-01119A	KNOB-POWER	MM-L7,ABS ,-,NI PL,-,-,-,-						
16	AH64-01112A	KNOB-FUNCTION	MM-L7,ABS ,-,NI PL,-,-,-,-						
17	AH61-00649A	SHAFT-GEAR	MM-L7,MBS,-,-,-						
18	AH61-00638A	HOLDER-GUIDE R	MM-L7,ABS 94HB,GRAY,-,-,-						
19	3405-000101	LEAF-MICRO	MLS-24						
20	AH61-00733A	BRACKET-GUIDE	MM-L7,SECC ,T 1.0,-,-						
21	3405-000101	LEAF-MICRO	MLS-24						
22	AH92-00949A	FRONT-PCB ASSY							
23	AH92-00942A	MAIN PCB ASSY							
24	AH62-00040A	HEAT SINK-MAIN	MM-L7,AL,-,-,-,-,20W/CH,-						
25	AH61-00634A	BRACKET-HEAT SINK	MM-L7,SECC 1.0T,-,-,-						
26	AH26-00129A	P/T							
27	AH92-00950A	POWER-PCB ASSY							
28	AH64-01103A	CABINET-BOTTOM	MM-L7,BASIC,MIPS 94V2,-,GRY						
29	AH39-00257A	AC CORD							
31	AH31-10021A	MOTOR-DC	RF-500TB, 9V DC1130mA						
32	AH66-00114A	PULLEY-MOTOR	POM BLK						
33	AH61-00636A	HOLDER-GEAR	MM-L7,ABS 94HB,GRAY,-,-,-						
34	AH66-00138A	GEAR-C	MM-L7,POM,-,-,-,BLK,-,-,-						
35	AH66-00063A	BELT-PULLEY	-,CR,-,-,-,BLK,S-2000						
36	AH66-00137A	GEAR-B	MM-L7,ABS,-,-,-,BLK,-,-,-						
37	AH66-00136A	GEAR-A	MM-L7,POM,-,-,-,BLK,-,-,-						
38	AH64-01102A	CABINET-SIDE R	MM-L7,BASIC,MIPS 94V2,-,GRY						
39	AH61-00210A	CAP-CD	,ABS 94HB,-,BLK,-,S-2000						
40	AH59-00106A	DECK-PICK UP	DA23L,MCD-MP65,BALL,-,-,-,DECK						
41	AH73-00010A	RUBBER—HOLDER	BUTYLENE,-,S-2000,-						
42	AH92-00923A	CD-PCB ASS'Y							
43	AH61-00635A	HOLDER-CD,DECK	MM-L7,ABS 94HB,GRAY,-,-,-						
44	AH73-00007A	RUBBER—MECHA A	BUTYL,-,S-2000,-						
45	AH64-01095A	CABINET-REAR	MM-L7,BASIC,MIPS 94V2,-,GRY						
46	AH64-01101A	CABINET-SIDE L	MM-L7,BASIC,MIPS 94V2,-,GRY						
46	AH64-01101B	CABINET-SIDE L	S-3650,BASIC,MIPS 94V2,-,GRY						
47	AH64-01116A	WINDOW-CASSETTE	MM-L7,PMMA,-,-,-,-,CLEAR,-						
48	AH64-01108A	DOOR-CASS	MM-L7,ABS L/GRAY,-,SILVER,-,-,-						
49	AH64-01232A	DECORATION-TOP	MM-L7,ABS,2.5,-,WHT,-						
50	AH64-01097A	CABINET-TOP	MM-L7,,MIPS 94V2,-,GRY	NO MIC					

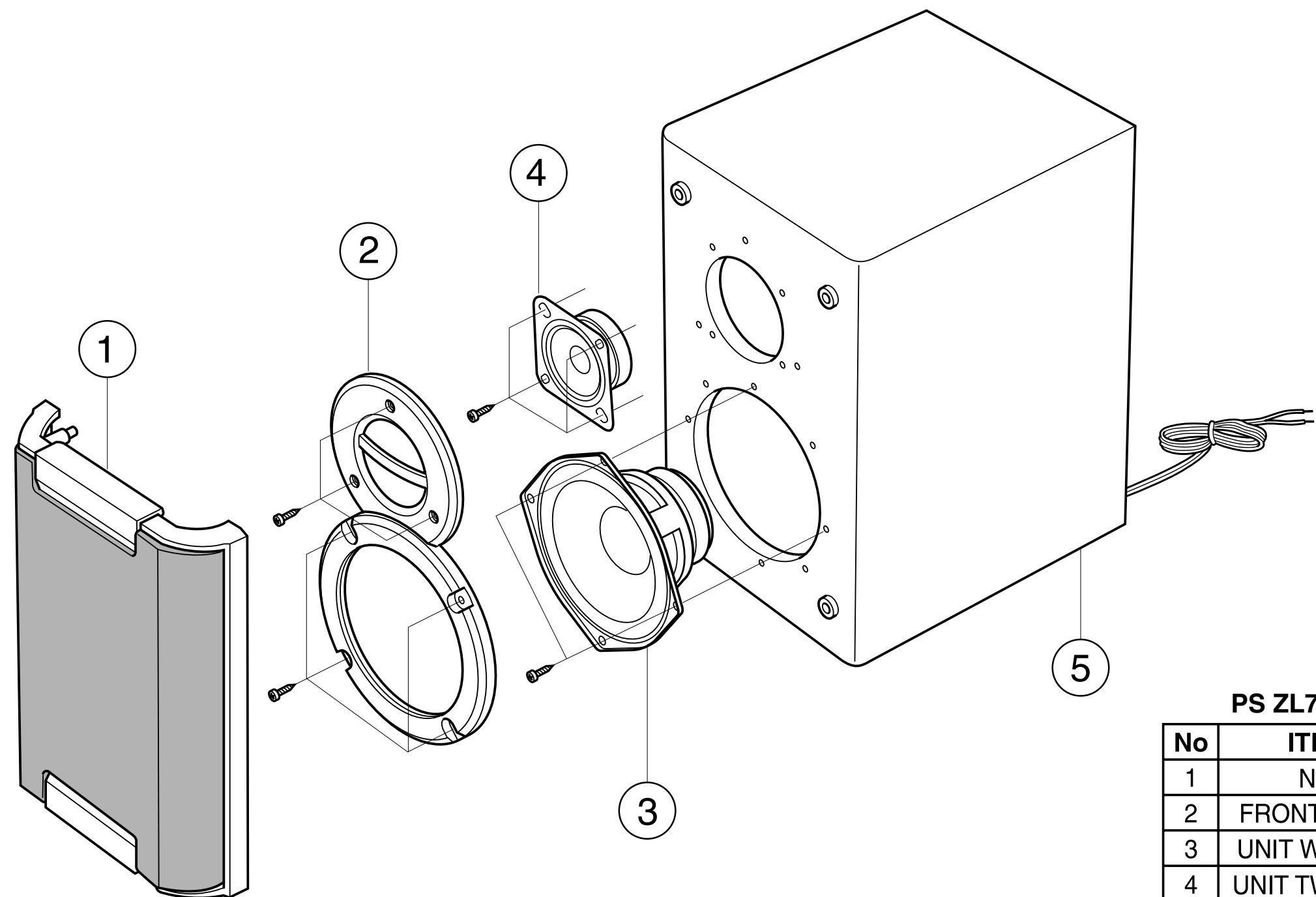
2-3 SPEAKER Exploded View and Parts list

2-3-1 MM-L7



PS L7E ; AH81-00380A		
No	ITEM	Code No
1	FRONT	AH81-00380C
2	NET	AH81-00380D
3	CABINET	AH81-00380G
4	UNIT W/F	AH81-00380H
5	UNIT T/W	AH81-00380M
6	PSL7,1PC	AH81-00380Q

\* CAUTION : It is used the bonding, connet FRONT PANEL to CABINET WOODEN.  
So when the disassembly, take extreme care not to demage the SPEAKER.



PS ZL7H ; AH81-00380B

No	ITEM	CODE No
1	NET	AH81-00380D
2	FRONT PANEL	AH81-00380C
3	UNIT WOOFER	AH81-00380H
4	UNIT TWEETER	AH81-00380M
5	CABINET	AH81-00380P
6	PS ZL7, 1PC	AH81-00380R

\* CAUTION : It is used the bonding, connet FRONT PANEL to CABINET WOODEN.  
So when the disassembly, take extreme care not to damage the SPEAKER.